

## Precision - our commitment

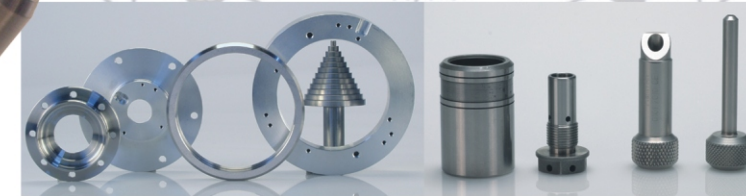
The latest production & state of art technologies combined with decades of experience is our successful prescription to make ourselves an ideal partner to solve your most difficult requirements.



Our mechanical capabilities accommodate steel, NE- materials or titanium alloys

Our quality assurance system (according to DIN EN ISO 9001-2000) is regularly audited by the TÜV Rheinland guaranteeing complete control of all our operational sequences from quotation to dispatch of order. On request calibration certificates can be supplied on all articles produced.

We are your competent partner for Kanban, Kaizen and e-business. From the realization of your ideas up to production stage. Use our experience as an innovative system supplier.



### Our manufacturing production lines:

- Turning of precision rotation parts(also individual manufacture) to quality class  $\pm 0.5\mu$
- Chasing tools · Thread grinding
- Thread chasing & grinding between the centres up to  $\pm 0.5\mu$
- External cylindrical surface grinding pointedless
- Internal cylindrical grindings and flat grinding to  $\pm 0.5\mu$
- External round-lap · Hone · Thread rollings, knurling tools
- CNC milling, boring, deburring etc.
- Electrolyt deburring · Construction and development

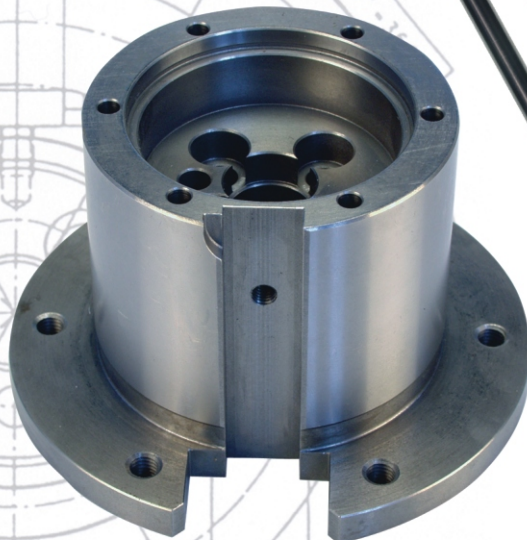
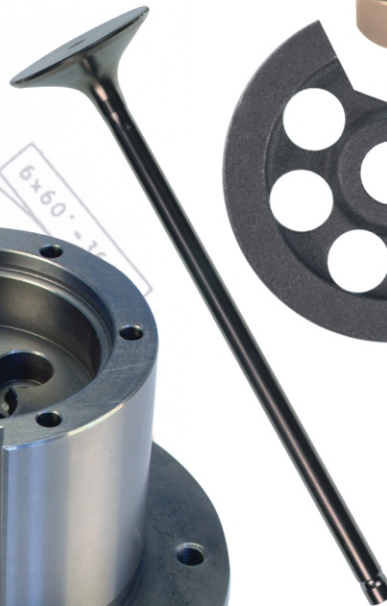
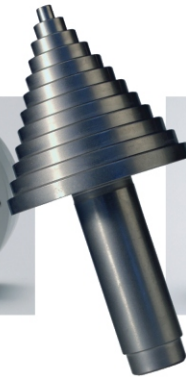


## Manufacturing of Precision Components

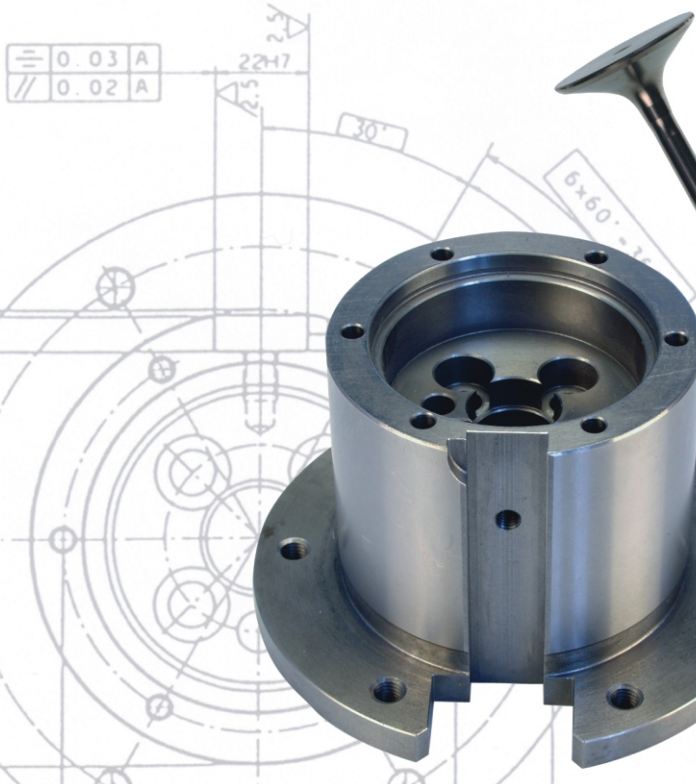




The **ARA** **RUPPEL ASBACH GmbH**  
was founded in 1946 as measuring tool factory.  
It is a medium-size private company, that  
for more than 55 years represents a reliable  
partner in the precision parts manufacture  
for industry.



From the solution identification of your  
individual requirements up to the building of  
prototypes and mass production, we offer  
a comprehensive technical know-how.



Precision!

Turning

Milling

Sharpening

Cylindrical &  
surface  
grinding

Thread  
grinding

Centreless  
grinding

Honing

Lapping

Broaching

Shot blasting

laser marking

Measuring  
devices

Assembly

Test laboratory  
is controlled  
to international  
standards

Construction  
and  
consultation



**ARA** **RUPPEL ASBACH GmbH**  
Bachstrasse 2  
D-64397 Modautal-Asbach

Phone: +49 (0) 61 67 / 931-0  
Fax: +49 (0) 61 67 / 931-222

eMail: [info@ara-germany.de](mailto:info@ara-germany.de)  
Internet: [www.ara-germany.de](http://www.ara-germany.de)

